

THE CAVELL LEITCH NEW ZEALAND JAZZ & BLUES FESTIVAL

22-27 APRIL 2014
CHRISTCHURCH

JAZZFESTIVALNZ.COM



cavell leitch

Creative partner

STRATEGY
DESIGN & ADVERTISING

Sponsored by

Christchurch
City Council



Digital partner

nv
interactive



THE PRESS

THE BREEZE
CHRISTCHURCH 94.5 FM



**The Canterbury
Community Trust**
Supporting the Community

WELCOME TO THE 2014 CAVELL LEITCH NEW ZEALAND JAZZ & BLUES FESTIVAL

Naming Rights Sponsor



Sponsored by



Creative Partner Digital Partner



Media Partners



Supporting Sponsors



Presenting Sponsors



Grants



The Cavell Leitch New Zealand Jazz & Blues Festival returns to Christchurch from 22–27 April, with an eclectic programme of events, staged in a variety of venues throughout the central city.

The 2014 festival programme is filled with local, national and international talent, including American blues legend **Charlie Musselwhite**, New Zealand’s own **Midge Marsden**, **George Washingmachine**, **Nairobi Trio**, **Solid Brew Band**, **Oval Office** and **The Lizard Kings**, and boasts a fantastic array of concerts featuring local stars **Tom Rainey**, **Jennine Bailey**, **Naomi Fergusson**, **Doug Caldwell**, **Kate Taylor**, **Janice Gray** and more.

Bringing the blues to Christchurch is 11 time Grammy nominee American blues legend **Charlie Musselwhite**. Charlie has received multiple awards for his amazing blues harmonica sound and his show promises to be a highlight of the year. This is a show not to be missed!

Jazz Symposium IV presents the very best home grown talent, in one of Christchurch’s most innovative venues, the **Transitional Cathedral**. Make sure you grab your tickets early and don’t miss out on **Jennine Bailey** and her jazz rhythm and blues band augmented by ten strings from the **Christchurch Symphony Orchestra**, and **Anna Whitaker** swinging with her big band, also a part of the Jazz in the Transitional Cathedral series.

Overwhelmed by the success of last year’s jazz dinner, this year we’re offering three separate dinners in association with **Black Estate Wines** and *The Press*. Matching music with food, **The George** hosts New Orleans jazz with **Harry Harrison** and his band, **Gustav’s** presents the *American Songbook* with **Lisa**

Tui, and **Black Estate** sets the scene for a bit of French style jazz with **Tyson Smith** and **Keith Petch**.

Our venues this year include a hotel ballroom, churches, restaurants and bars. The Bedford (CPSA) is the venue for both our **Charlie Musselwhite** and **The Lizard Kings – The Doors Experience** shows. Rydges Ballroom provides a club style atmosphere and features a line up of international, national and local talent. The CPIT Jazz Auditorium will stage two shows most nights for the festival at 6pm and 8pm, the Christchurch Music Centre hosts lunchtime concerts at the Salvation Army and the Christchurch City Council foyer resounds to a series of piano concerts.

The **2014 Cavell Leitch New Zealand Jazz & Blues Festival** is made possible by the generosity of our sponsors, including our loyal naming partner Cavell Leitch, as well as *The Press*, Strategy, the Christchurch City Council, Canterbury Community Trust, NV Interactive and The Breeze. Supporting sponsors CPIT Jazz School, The Music Centre of Christchurch, Pernod Ricard and Winnie Bagoes, as well as our accommodation and venue partner Rydges Latimer. We also couldn’t possibly do it without you, our loyal patrons. Thank you for your support and we look forward to entertaining you over a fabulous six days in April. Enjoy!

Jodi Wright, Director

STAFF

Jodi Wright	Festival Director
Lindsay Mayor-Brady	Production Manager
Marianne Hargreaves	Marketing Manager
Hayley Brosnahan	Ticketing Coordinator


FESTIVAL TRUST

Austin Forbes	Chair
Tom Rainey	Trustee
Hall Cannon	Trustee
Neill Pickard	Trustee
Tim Trollope	Trustee

The Cavell Leitch New Zealand Jazz and Blues Festival is produced by the Christchurch International Jazz Festival Trust, PO Box 1089, Christchurch 8140, New Zealand.

Website: jazzfestivalnz.com
Email: info@jazzfestivalnz.com

If you are interested in receiving our Jazz Festival newsletters please go to the website and sign up.

 Like us on Facebook
facebook.com/TheNZInternationalJazzandBluesFestival

THE PRESS HEADLINER

CHARLIE
MUSSELWHITE

WEDNESDAY 23 APRIL, 8PM
THE BEDFORD, CPSA, MADRAS ST

\$45 Tickets available from Dash Tickets (booking fee applies)
www.dashtickets.co.nz or 0800 327 484
Limited door sales (cash only). Cash bar onsite.



CHARLIE MUSSELWHITE

Charlie Musselwhite has been inducted in the Blues Hall of Fame, won 32 Blues Music Awards, has 11 Grammy nominations, including for 2013 Best Blues Album, and was voted the Most Outstanding Musician (Harmonica) at the 2013 Living Blues Awards.

Mississippi born, he is regarded as one of the most revered blues musicians in the world. The harmonica master, also a respected singer and songwriter, has performed and recorded with

Bonnie Raitt, Tom Waits, John Lee Hooker, Howlin' Wolf and Muddy Waters, to name just a few, and in 2012 teamed up with Ben Harper to record the album *Get Up*, which won the Grammy for Best Blues Album this year.

In this special Christchurch performance, the blues legend will be playing numbers from his latest album *Juke Joint Chapel* with his band Matt Stubbs (guitar), Steven Froberg (bass) and Wirtford Core Jnr (drums).

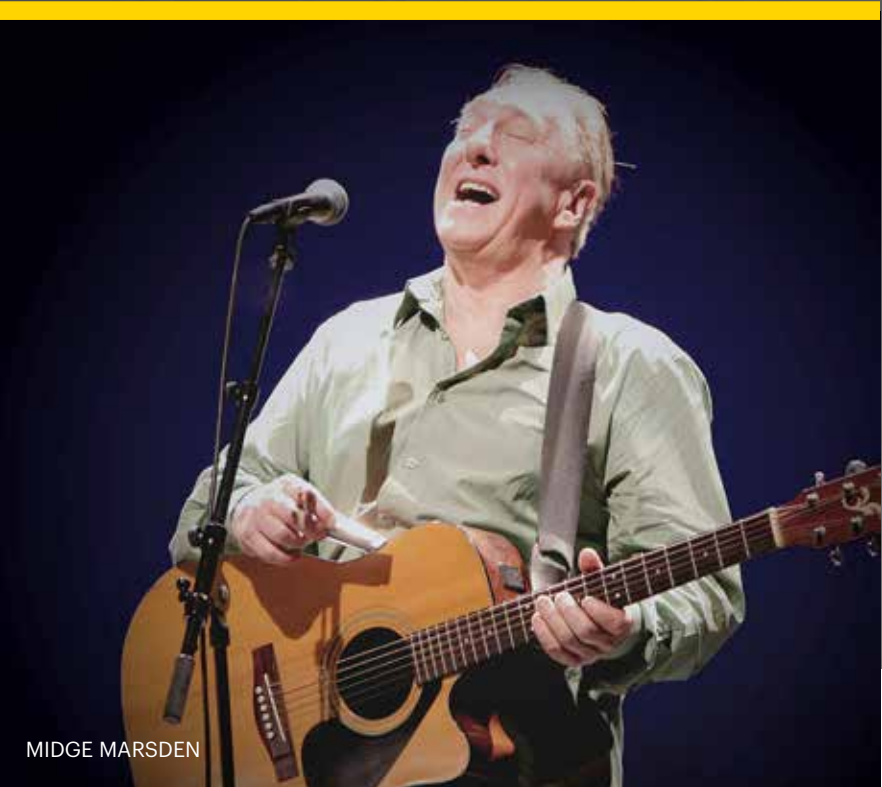
THE PRESS HEADLINER

MIDGE
MARSDEN

PRESENTED IN ASSOCIATION WITH WINNIE BAGOES

THURSDAY 24 APRIL, 9.30PM
WINNIE BAGOES, CNR MADRAS & ALLEN STS

\$30 Tickets available from Dash Tickets (booking fee applies)
www.dashtickets.co.nz or 0800 327 484
Limited door sales (cash only)



MIDGE MARSDEN

Midge Marsden has played thousands of concerts and performed with a list of artists that reads like a definitive Who's Who of New Zealand music luminaries. He has been voted New Zealand Entertainer of the Year, toured the USA performing in some of the most prestigious music venues in California, Texas, Mississippi and Louisiana, and still remains the number one rhythm and blues artist in New Zealand today.

With a brand new album out in time for the festival, he is joined on stage for this live blues show by Chet O'Connell (guitar/vocals), Neil Hannan (bass guitar), Grant Winterburn (piano) and Mike Abbott (drums). Together their musicianship and unstoppable energy combine to guarantee a great show with a bit of everything from their vast repertoire: blues, country, rock 'n roll, old and new.

Treat yourself
to a brilliant legal performance.



JAZZ AT RYDGES

IN ASSOCIATION WITH
RYDGES LATIMER CHRISTCHURCH

RYDGES LATIMER CHRISTCHURCH
30 LATIMER SQUARE

Tickets available from Dash Tickets (except Mike Frost and the Icemen). Booking fee applies.
www.dashtickets.co.nz or 0800 327 484
Limited door sales (cash only)



\$35 / \$200 TABLE

CABARET STYLE SEATING
Rydges Ballroom seat tickets - \$35
Rydges Ballroom reserved tables for four people, with food and beverage - \$200

**FEEL THE MANOUCHE
GEORGE WASHINGMACHINE AND BAND**
TUESDAY 22 APRIL, 7.30PM
RYDGES BALLROOM



George Washingmachine, renowned for his interpretation of jazz violin, returns to Christchurch with his band of musicians to play gypsy waltzes, swing jazz, choro and many other flavours of music in 'Feel the Manouche'.

George Washingmachine (violin, ukelele & vocals), Arthur Washington (guitar), Clare O'Meara (accordion, violin & vocals), Stan Valacos (double bass).

NAIROBI TRIO
THURSDAY 24 APRIL, 7.30PM
RYDGES BALLROOM

The Nairobi Trio is undeniably one of New Zealand's favourite jazz bands. After 25 years playing together their music is as contagious and expressive as ever. They are a must-see act and regularly amaze concert goers at festivals around the world.

Richard Adams (violin & vocals), Peter Koopman (double bass & vocals) and John Quigley (guitar & vocals).



NOT TO **BLOW OUR OWN TRUMPET**
BUT WE ARE NEW ZEALANDS NEWEST 4.5 STAR HOTEL.



RESERVATIONS 0800 176176- QUOTE JAZZ FEST | WWW.RYDGES.COM/LATIMERCHRISTCHURCH

**MIKE FROST
AND THE ICEMEN**
WEDNESDAY 23 APRIL, 8.30PM
BLOODY MARY'S AT RYDGES

FREE ENTRY



Mike Frost plays the authentic blues of the golden area of the '40s and '50s, King Leo is a veteran blues musician drawing on the classic hard-driving sounds of Chicago, Texas and New Orleans. Together they form The Icemen, crafting the most authentic blues sound you'll hear this side of the West Coast of the USA.

Mike Frost (vocals, guitar), King Leo (vocals, guitar, harmonica, keyboards), Vernon Sawers (bass) and Jim Strang (drums).

**FROM THE CHAPEL TO THE CLUB
NAOMI FERGUSON**
FRIDAY 25 APRIL, 7.30PM
RYDGES BALLROOM

In this concert Naomi Ferguson explores her love of music with blues, gospel and jazz inspirations, drawn from the repertoire of Ray Charles, Etta James, Mahalia Jackson and Aretha Franklin, with an all star band that will take you on a journey to feed the soul.

Naomi Ferguson (vocals), Andy Genge (guitar), Darren Pickering (keyboards), Mike Story (bass), Luke Smilie (drums), Gwyn Reynolds (saxophone), Alex van den Broek (trumpet).

JAZZ IN THE TRANSITIONAL CATHEDRAL

**CHRISTCHURCH
TRANSITIONAL CATHEDRAL**
234 HEREFORD STREET

Tickets available from Dash Tickets.
Booking fee applies.
www.dashtickets.co.nz or 0800 327 484
Limited door sales (cash only)



SYMPOSIUM IV TUESDAY 22 APRIL, 7.30PM

\$25

Symposium IV brings the striking, contemporary sound of modern Big Band jazz into the impressive, bold space of the Transitional Cathedral.

Revisiting the Symposium series of concerts held in the Cathedral in the Square in 2007, 2008 and 2009, Symposium IV looks at the new Transitional Cathedral as the inspiration for this performance of original and improvised music in response to this new space's fine acoustic and innovative architecture.

Comprising faculty members, students, graduates and associates of CPIT Jazz School, Symposium IV brings some of New Zealand's finest jazz performers together as a Big Band to perform some of the latest compositions from leading composers such as Maria Schneider, Darcy James Argue, Bob Curnow and Pat Metheny, and locals Glen Wagstaff and Scott Taitoko.

Featuring: Gwyn Reynolds, George Cook, Jimmy Rainey, Chris Burke, Lana Law (saxophones), Cam Pearce, Tyme Masters, Ian McLachlan, Greg Knowles (trumpets), Scott Taitoko, Aaron Chandler, David Wallace, Karl Magevka (trombones), Darren Pickering (piano), Glen Wagstaff (guitar), Michael Story (bass), Michael Thompson (drums), Tom Rainey (conductor).

IN THE MOOD FOR LOVE JENNINE BAILEY IN CONCERT SATURDAY 26 APRIL, 7.30PM

\$25

Jennine Bailey is a Christchurch jazz singer who has gained a formidable reputation around the country for her individual interpretations of jazz and contemporary music. Tom Rainey is a pianist, conductor and arranger extraordinaire. Together they have produced a new album of classic songs with strings, entitled *In the Mood for Love*. Featuring brand new arrangements, this concert will be the first live performance of this wonderful fusion of jazz and contemporary music with vocals by Jennine Bailey, a rhythm section, soloists and string players.

Injecting new life and complexity into jazz standards, such as *Night and Day*, *Moonlight in Vermont*, *No Moon at All* and *Wild is the Wind*, other titles have been carefully selected from contemporary styles including New Zealand pop standards, *Oughta Be in Love* (Dave Dobbyn) and spirituals *Wade in the Water*. Jennine Bailey (vocals) and Tom Rainey accompanied by rhythm section, soloists and a ten piece string ensemble from the Christchurch Symphony Orchestra.

RISE UP SWINGING SUNDAY 27 APRIL, 1.30PM

\$15



From the Andrews Sisters to Beyonce, Anna Whitaker presents an afternoon of swing music bound to get you moving in your seats.

With her seven piece band she weaves a historical journey from swing's first tunes through to the present day, recreating old school jazz with a modern twist, and giving the swing treatment to today's standards.

Anna Whitaker (vocals), Gwyn Reynolds (saxophone), Scott Taitoko (trombone), Cameron Pearce (trumpet), Catherine Wells (piano), Harry Harrison (guitar), Michael Bell (bass) and Michael Thompson (drums).

We're crazy about jazz too.

CPIT has been at the heart of Christchurch's jazz scene for more than 20 years. We're proud to support the Cavell Leitch NZ Jazz and Blues festival with our great facilities and performances by our talented staff and students.

**Hear more CPIT talent
every Monday at 1pm
during term time.**

**For details visit:
www.cpit.ac.nz
or phone 0800 24 24 76**



PHOTO: Dave Wethey

JAZZ IN THE CITY

WITH THE SUPPORT OF THE CPIT JAZZ SCHOOL

\$15

DOUG CALDWELL AUDITORIUM
CPIT JAZZ SCHOOL, CNR HIGH & MADRAS STS

Tickets available from Dash Tickets. Booking fee applies.
www.dashtickets.co.nz or 0800 327 484. Limited door sales.



SOLID BREW

JAZZ AT 6PM

\$10

DOUG CALDWELL AUDITORIUM
CPIT JAZZ SCHOOL,
CNR HIGH & MADRAS STS

Door sales only

NICOLA HART
TUESDAY 22 APRIL, 6PM

Drawing on inspiration from the likes of Ella Fitzgerald, Cyrille Aimee and Gretchen Parlato, Nicola Hart has a keen interest for vocal improvisation and scatting, and presents an eclectic mix of vocal jazz, from traditional swing to a more modern interpretation.

SAM BLAKELOCK
WEDNESDAY 23 APRIL, 6PM

CPIT Jazz School trained and New York City based, guitarist Sam Blakelock is quickly becoming recognised as one of New Zealand's brightest young musical talents. Melding influences of jazz, rock, classical and world music he performs original compositions with a quartet of great local musicians.

THE UP SHUTS
THURSDAY 24 APRIL, 6PM

Challenging the boundaries of jazz through extended techniques and boundless improvisations, the Up Shuts come together for a memorable evening melding their combined talents. Bassist Symon Palmer, who recently opened for Lorde, is joined by Rueben Derrick on saxophone and Jonty O'Connor on drums.

GLEN WAGSTAFF
FRIDAY 25 APRIL, 6PM

Glen Wagstaff, composer and guitarist, has been writing and performing with large ensembles after returning from New York and Toronto where he was inspired by a variety of modern jazz artists including Maria Schneider, Brian Blade, Aaron Parks and Kenny Wheeler.

Glen Wagstaff (guitar), Ellen Barry (vocals), Gwyn Reynolds (tenor sax), George Cook (alto sax), Tamara Smith (flute), Cameron Pearce (trumpet), Scott Taitoko (trombone), Catherine Wells (piano), Michael Thompson (drums), Chris Wethey (bass).

MIRANDA ROUT - THE LONG ROAD TO CHOCOLATE JESUS
SATURDAY 26 APRIL, 6PM

Presenting an eclectic mix of classic jazz and blues songs, from Billie Holiday to Tom Waits, along with some original compositions, Miranda Rout returns to Christchurch after an overseas trip that included singing at Ronnie Scott's in London. This promises to be an energised evening of sultry tones and upbeat fun.

Miranda Rout (vocals), David Goldwater (guitar), Ted Meager (drums), Mike Kime (bass), Barry Brinson (piano).

COLETTE JANSEN AND DOUG CALDWELL
TUESDAY 22 APRIL, 8PM

Colette Jansen meets Doug Caldwell - the High Street Sessions is the name of a long awaited CD that was released in 2013. Returning to Christchurch from Wellington where she hosts Jazz Footprints on Radio New Zealand National, Colette joins Doug, known among the jazz fraternity as the 'Maestro', on stage performing songs he has arranged including *Stardust*, *Honeysuckle Rose* and *Teach Me Tonight*.

THE HARMOLODIC BIRD
WEDNESDAY 23 APRIL, 8PM

Expressing everything from the raucous to the delicate, The Harmolodic Bird draws on the musical philosophy and improvisational method of jazz saxophonist Ornette Coleman and creates a spacious sound with a strong focus on the interactions between rhythm and melody.

The Harmolodic Bird are Jeff Henderson (baritone, alto sax), Rueben Derrick (tenor saxophone, clarinet), Gerard Crewdson (trombone, pocket trumpet), Tom Callwood (double bass) and Joe McCallum (drums).

KATE TAYLOR SINGS TIERNEY SUTTON
THURSDAY 24 APRIL, 8PM

Kate Taylor brings her most favoured Tierney Sutton arrangements to life, taking the old standards and giving them a fresh, modern twist with scats that are fast, complex, and tantalizing to the ear.

Kate Taylor (vocals), Darren Pickering (piano), Michael Bell (bass), Scott Taitoko (trombone), Andy Genge (guitar) and Luke Smillie (drums).

SOLID BREW
SATURDAY 26 APRIL, 8PM

Solid Brew are a progressive blues and jazz rock band from Germany. Each band member is highly regarded for their individual style, and when playing together the band celebrates their soulful connection through a variety of expressive and well rounded songs, loaded with groove explosions and thrilling improvisations...resulting in a unique brew.

Thomas Koenig (guitar), Stefan Nagler (piano), Markus Daßau (drummer) and Arnold Ogrodnik (bass).

JAZZ IN THE CITY

Tickets available from Dash Tickets.
Booking fee applies.
www.dashtickets.co.nz or 0800 327 484
Limited door sales (cash only).

THE PRESS HEADLINER

THE LIZARD KINGS THE DOORS EXPERIENCE

\$35

FRIDAY 25 APRIL, 8PM
**THE BEDFORD, CPSA,
MADRAS ST**



THE LIZARD KINGS

Jim Morrison and The Doors reigned over the '70s with a high octane mix of music and posturing that propelled a generation headlong through the aftermath of Woodstock and Altamont and into the post-Vietnam war era. From a time of drugs, politics and lost innocence, The Lizard Kings pay tribute to the music of one of the greatest bands of all timethis is The Doors Experience.

Marcus Roebuck (vocals), Liam Ryan (keyboards), Glynn Olsen (guitar), Sahn Bishop (bass).

PRESENTED IN ASSOCIATION WITH WINNIE BAGOES

OVAL OFFICE 'DON'T STOP' E.P RELEASE PARTY

\$15

FRIDAY 25 APRIL, 10PM
**WINNIE BAGOES, CNR
MADRAS AND ALLEN STS**



OVAL OFFICE

Oval Office celebrates the release of their new E.P following their sell out show, with singer Annie Crummer, during the 2012 festival. Fresh from the studio, the band will be performing a new show featuring tracks from the E.P plus material from their upcoming album due out in late 2014. As always, there will be some familiar jams and rare groove covers plus some very special guest appearances!

The Christchurch based unit has steadily built up a reputation as one of New Zealand's top live acts with their brand of original funk and soul that delivers hard hitting grooves, explosive horn lines and enticing, soulful vocals. A night not to be missed, there ain't no party like an Office party!

Richie Pickard (bass), Lissel Stewart (vocals), Andy Genge (guitar), Gwyn Reynolds (saxophone), Scott Taitoko (trombone), Darren Pickering (keyboards), Luke Smilie (drums).

Also on at Winnie Bagoes City (after Oval Office), Friday 25 April, City Nights present T-Williams. Details at facebook.com/WinnieBagoesCity

PROUD SPONSOR OF THE NEW ZEALAND JAZZ AND BLUES FESTIVAL



WINNIE BAGOES

CITY~ 153 MADRAS ST. (03) 366 6315
WWW.WINNIEBAGOES.CO.NZ

HOME OF
NZ's BEST
PIZZA

**MIDGE
MARSDEN**
THURS 24TH APRIL

BOOKINGS VIA DASH. LIMITED DOORSALES.

**OVAL
OFFICE**
FRI 25TH APRIL

JAZZ FOR LUNCH

IN ASSOCIATION WITH
THE MUSIC CENTRE OF CHRISTCHURCH

\$5

1.45PM
FOLLOWED BY
LIGHT AFTERNOON TEA
Door sales only

SALVATION ARMY CITADEL
250 COLOMBO STREET, BECKENHAM



JANICE GRAY

SWING ERA STANDARDS TUESDAY 22 APRIL, 1.45PM

Listen to a dazzling collection of swing era standards featuring compositions by Larry Adler and Stephane Grappelli, the collaborations of Gershwin/Heitfetz, 'nuevo tango' à la Astor Piazzolla and other favourites. This will be an eclectic combination of instrumental colours performed by a group of musicians with loads of swing, delight and virtuosity.

Cathy Irons (violin), Nola Mills (harmonica), Barry Brinson (piano) and Mike Kime (double bass).

JANICE AND THE BOYS WEDNESDAY 23 APRIL, 1.45PM

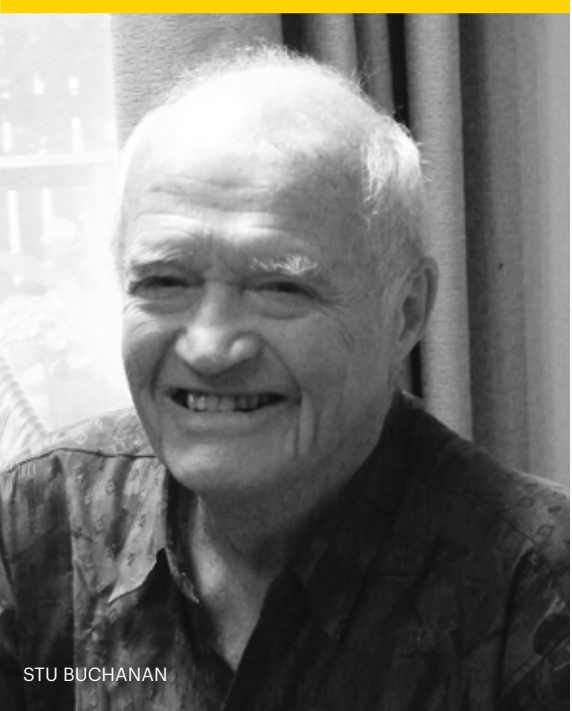
Be entertained with a selection of fun, jazz standards and light hearted witty rhetoric with consummate performer Janice Gray and her formidable team of skilled musicians. From a kittenish Blossom Dearie to a full-bodied baritone without a second's hesitation, Janice has something new, something old, and always something to make you smile.

Janice Gray (vocals), Bob Heinz (guitar) and Tom Rainey (double bass).

JAZZ & BLUES COLLECTIVE THURSDAY 24 APRIL, 1.45PM

Featuring tunes from some of the big names of jazz, along with some original compositions, this entertaining jazz and blues collective will impress you with their skilled musicianship. Stu Buchanan, whose name has long been associated with the local music scene including forming the Garden City Big Band, leads the charge.

Stu Buchanan (vocal, clarinet, sax), Ralph Woodham (piano), with Mike Kime (double bass).



STU BUCHANAN

JAZZ IN THE FOYER

FREE

1PM
CCC CIVIC OFFICE FOYER
WORCESTER BOULEVARD

NICK DOW TUESDAY 22 APRIL & THURSDAY 24 APRIL, 1PM

Nick Dow has always been motivated by music, playing violin at school, singing with the New Zealand Youth Choir on tour in the US and Canada, improvising on the piano and now in his third year of studying at CPIT Jazz School. Come and listen to Nick with his original jazz piano interpretations.

CATHERINE WELLS WEDNESDAY 23 APRIL, 1PM

Trained as a classical pianist, clarinettist and composer, Catherine Wells fell in love with jazz and went on to major in jazz piano and composition. Now teaching at CPIT Jazz School, she has released a CD of original compositions, and performs some of them here.

**Jazz, blues or swing...
soak up the atmosphere
while you have a coffee
or just pause as you
pass through!**



James Daniels is back **THE BREEZE**
James and Hilary,
Weekdays 6am to 10am
CHRISTCHURCH 94.5 FM

JAZZ DINE

WITH THE SUPPORT OF THE PRESS AND BLACK ESTATE



Following the runaway success of the jazz dinner during last year's festival, Black Estate Wines, *The Press* and the 2014 Cavell Leitch New Zealand Jazz & Blues Festival present three special nights of jazz, food and wine. Three restaurants, three jazz inspired menus, three jazz bands each served with a four course meal designed by the head chefs at The George, Gustav's and Black Estate, and all matched with Black Estate wines.

Tickets include a four course meal: canapés, entree, main course and dessert, three glasses of Black Estate wine, Pernod Ricard bubbles on arrival and live music.

Jazz Dine is proudly supported by *The Press*. Subscribers receive a \$20 discount on the ticket price and are eligible to book a table of 8 for \$980. Book early to secure your seat at a table!

\$125 / \$145 / \$980 (TABLE FOR 8)

Tickets available from Dash Tickets.
Booking fee applies.
www.dashtickets.co.nz or 0800 327 484

THE GEORGE NEW ORLEANS JAZZ & BLUES TUESDAY 22 APRIL, 6.30PM

THE GEORGE
50 PARK TERRACE

FOOD STYLE: New Orleans...think spice, cajun and gumbo just like your mamma used to make!

MENU: Created and presented by Executive Chef, Andrew Brown.

JAZZ: Harry Harrison & Yellow Moon.
New Orleans-style funk, blues and jazz will be served up by Harry Harrison & Yellow Moon to accompany the Louisiana cuisine.
Harry Harrison (guitar, banjo, vocals), Justine S (saxophones, flute, vocals), Mike Story (double bass).

GUSTAV'S NEW YORK JAZZ WEDNESDAY 23 APRIL, 6.30PM

GUSTAV'S WINE BAR AND KITCHEN
THE TANNERY, WOOLSTON

FOOD STYLE: New York...think steaks, old-school American style cooking.

MENU: Created and presented by Head Chef Josh Young.

JAZZ: Lisa Tui sings the lasting ballads and show tunes from the Great American Songbook including Gershwin, Harold Arlen, Rodgers, Kern and Duke Ellington, demonstrating New York's everlasting musical influence upon jazz around the world.
Lisa Tui (vocals), Jono Brown (bass), Dougal Canard (piano).

BLACK ESTATE FRENCH GYPSY JAZZ THURSDAY 24 APRIL, 6PM

BLACK ESTATE TASTING
ROOM AND WINERY
OMIHI, WAIPARA

Ticket includes return bus,
leaving from The George at 6pm

FOOD STYLE: French flavour...giving vineyard cuisine a gypsy jazz twist!

MENU: Created and presented by Head Chef Jacob Stanley.

WINE TALK: Nicholas Brown, wine maker.

JAZZ: Gypsy Jazz became popular in France during the swing era of the 1940s. Following the tradition of one of the most famous proponents, Django Reinhardt, this guitar duo play standards from the gypsy jazz repertoire.
Tyson Smith and Keith Petch.



KEVIN PETCH

THE CAVELL LEITCH NEW ZEALAND JAZZ & BLUES FESTIVAL

EVENTS CALENDAR APRIL 2014

	TUES 22 APRIL	WED 23 APRIL	THURS 24 APRIL	FRI 25 APRIL	SAT 26 APRIL	SUN 27 APRIL
JAZZ IN THE TRANSITIONAL CATHEDRAL 234 Hereford Street Tickets available via Dash Tickets See below for booking information Limited door sales (cash only)	SYMPOSIUM IV 7.30pm \$25				IN THE MOOD FOR LOVE: JENNINE BAILEY 7.30pm \$25	RISE UP SWINGING 1.30pm \$15
JAZZ AT RYDGES In association with Rydges Hotel Rydges Latimer Square Tickets available via Dash Tickets See below for booking information Limited door sales (cash only) Reserved tables for 4 W/F&B available	GEORGE WASHINGMACHINE & BAND 7.30pm \$35 Rydges Ballroom	MIKE FROST & THE ICEMEN 8.30pm FREE Rydges Bloody Mary's	NAIROBI TRIO 7.30pm \$35 Rydges Ballroom	NAOMI FERGUSON 7.30pm \$35 Rydges Ballroom		
THE PRESS HEADLINERS JAZZ IN THE CITY Tickets available via Dash Tickets See below for booking information Limited door sales (cash only)		<i>THE PRESS HEADLINER</i> CHARLIE MUSSELWHITE 8pm \$45 Bedford CPSA CPIT Madras St	<i>THE PRESS HEADLINER</i> MIDGE MARSDEN In association with Winnie Bagoes 9.30pm \$30 Winnie Bagoes Cnr Madras and Allen Sts	<i>THE PRESS HEADLINER</i> THE LIZARD KINGS In association with Winnie Bagoes 8pm \$35 Bedford CPSA CPIT Madras St OVAL OFFICE 10pm \$15 Winnie Bagoes Cnr Madras and Allen Sts		
JAZZ IN THE CITY Doug Caldwell Auditorium CPIT Jazz School Cnr High and Madras Streets Tickets available via Dash Tickets See below for booking information Limited door sales (cash only)	COLETTE JANSEN & DOUG CALDWELL 8pm \$15	THE HARMOLODIC BIRD 8pm \$15	KATE TAYLOR SINGS TIERNEY SUTTON 8pm \$15		SOLID BREW 8pm \$15	
JAZZ AT 6PM Doug Caldwell Auditorium CPIT Jazz School Cnr High and Madras Streets \$10 DOOR SALES ONLY (CASH)	NICOLA HART 6pm \$10	SAM BLAKELOCK 6pm \$10	THE UP SHUTS 6pm \$10	GLEN WAGSTAFF 6pm \$10	MIRANDA ROUT 6pm \$10	
JAZZ FOR LUNCH In association with The Music Centre of Christchurch Salvation Army Citadel 250 Colombo Street, Beckenham \$5 DOOR SALES ONLY	SWING ERA STANDARDS 1.45pm \$5	JANICE & THE BOYS 1.45pm \$5	JAZZ & BLUES COLLECTIVE 1.45pm \$5			
JAZZ IN THE FOYER CCC Civic Building Worcester Boulevard FREE (VERY LIMITED SEATING)	NICK DOW 1pm FREE	CATHERINE WELLS 1pm FREE	NICK DOW 1pm FREE			
JAZZ DINE IN ASSOCIATION WITH BLACK ESTATE AND <i>THE PRESS</i> TICKETS \$145/\$125 Tickets available via Dash Tickets See below for booking information	NEW ORLEANS STYLE HARRY HARRISON & YELLOW MOON The George 50 Park Tce 6.30pm	NEW YORK STYLE LISA TUI Gustav's The Tannery 6.30pm	FRENCH STYLE TYSON SMITH & KEITH PETCH Black Estate Waipara Valley 6.00pm (bus leaves The George)			

BOOKINGS

Tickets to many festival events are available through Dash Tickets (booking fee applies).
www.dashtickets.co.nz
Ph: 0800 DASH TIX (0800 327 484)

DashTickets Outlets:

Resellers as listed on ticket pages
I-SITE Christchurch
I-SITE Kaiapoi
Northlands Shopping Centre
The Palms Shopping Centre

TICKET REFUNDS

There are no exchanges or refunds on the ticket price except as required by law.



The Press

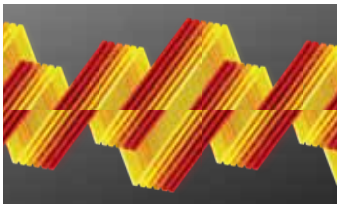
a major player sharper than C# Major
and a proud supporter of

The Cavell Leitch New Zealand
Jazz & Blues Festival

THE PRESS

STRATEGY DESIGN & ADVERTISING

Creative partner to the Cavell Leitch New Zealand Jazz & Blues Festival for the last eight years.



NEW ZEALAND
JAZZ & BLUES FESTIVAL '14



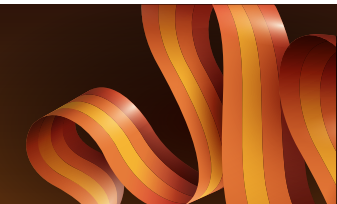
MAHI FX



KATHMANDU



SHARE AN IDEA



NEW ZEALAND
JAZZ & BLUES FESTIVAL '10



CHRISTCHURCH ART
GALLERY - RON MUECK



NEW ZEALAND
JAZZ & BLUES FESTIVAL '13



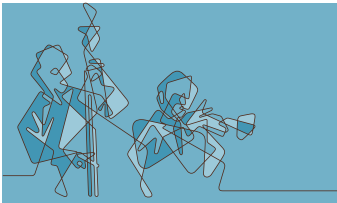
CLOUDY BAY



CHRISTCHURCH ART
GALLERY



DJCA



NEW ZEALAND
JAZZ & BLUES FESTIVAL '08



STRATEGY HOUSE



BANKS PENINSULA FARMS



NEW ZEALAND
JAZZ & BLUES FESTIVAL '12



PUREAU



CAMPER SHOES



LITTLE BEAUTY



UNIVERSITY OF SYDNEY



JAGUAR



THINKING BOOK



KOVACS



NEW ZEALAND
JAZZ & BLUES FESTIVAL '09



SCENIC HOTELS



CHRISTCHURCH
SYMPHONY ORCHESTRA



THE GREAT
CATERING COMPANY



NEW ZEALAND
JAZZ & BLUES FESTIVAL '07



THE MONDAY ROOM



WARREN + MAHONEY



NGAI TAHU SEAFOOD



PONSONBY SOCIAL CLUB